

26
30

P
A
R
A
D
I
S
E
R
O
A
D

RICHMOND TW9 1SE



CONTENTS

02

26
30
P
A
R
A
D
I
S
E
R
O
A
D

CONTEMPORARY TOWN CENTRE WORKSPACE 1,554 TO 10,537 SQ FT TO LET

A contemporary
office refurbishment
located at the heart of
Richmond town centre



REMODELLED ENTRANCE & FEATURE GREEN WALL



NEW RECEPTION AREA

26-30
PARADISE ROAD

4

3

2

1

0



26
30
PARADISE ROAD



THE BUILDING

26-30 Paradise Road has undergone a comprehensive refurbishment offering contemporary workspace in a remodelled building in the heart of Richmond town centre.



SPECIFICATION



Remodelled entrance
and new reception area



Enhanced external
façade with feature
green wall



Contemporary internal
specification



Exposed
VRF Air Conditioning



EPC Rating : B28



LED lighting



Third floor
private terrace



Secure cycle
storage and
lockers

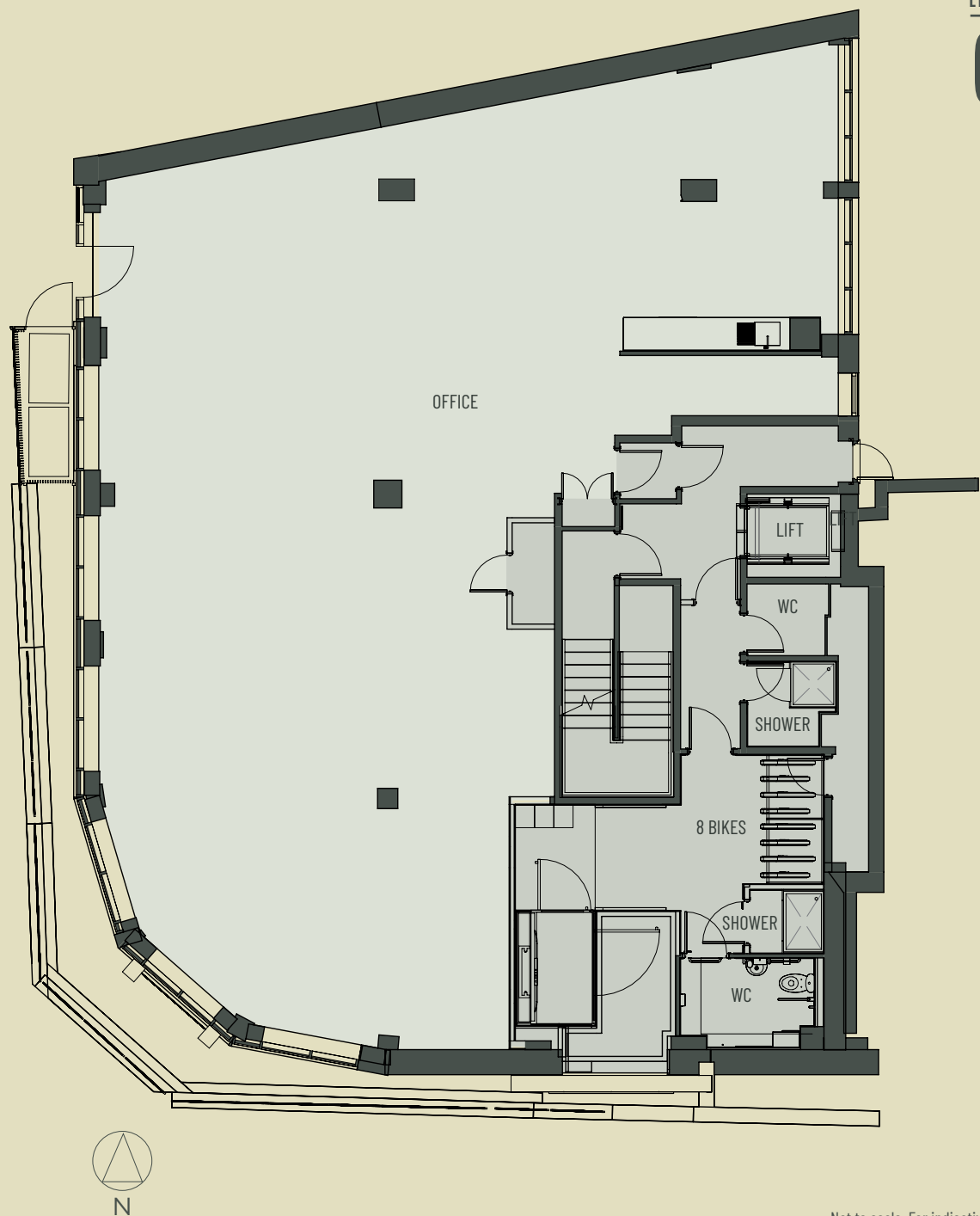


W/C's and
Showers



FLOOR PLANS

Floor	sq ft	sq m
Level 4	1,554	144.4
Level 3	2,468	229.3
Level 2	2,462	228.7
Level 1	2,047	190.2
→ Level 0	2,005	186.3
Total	10,537	978.9

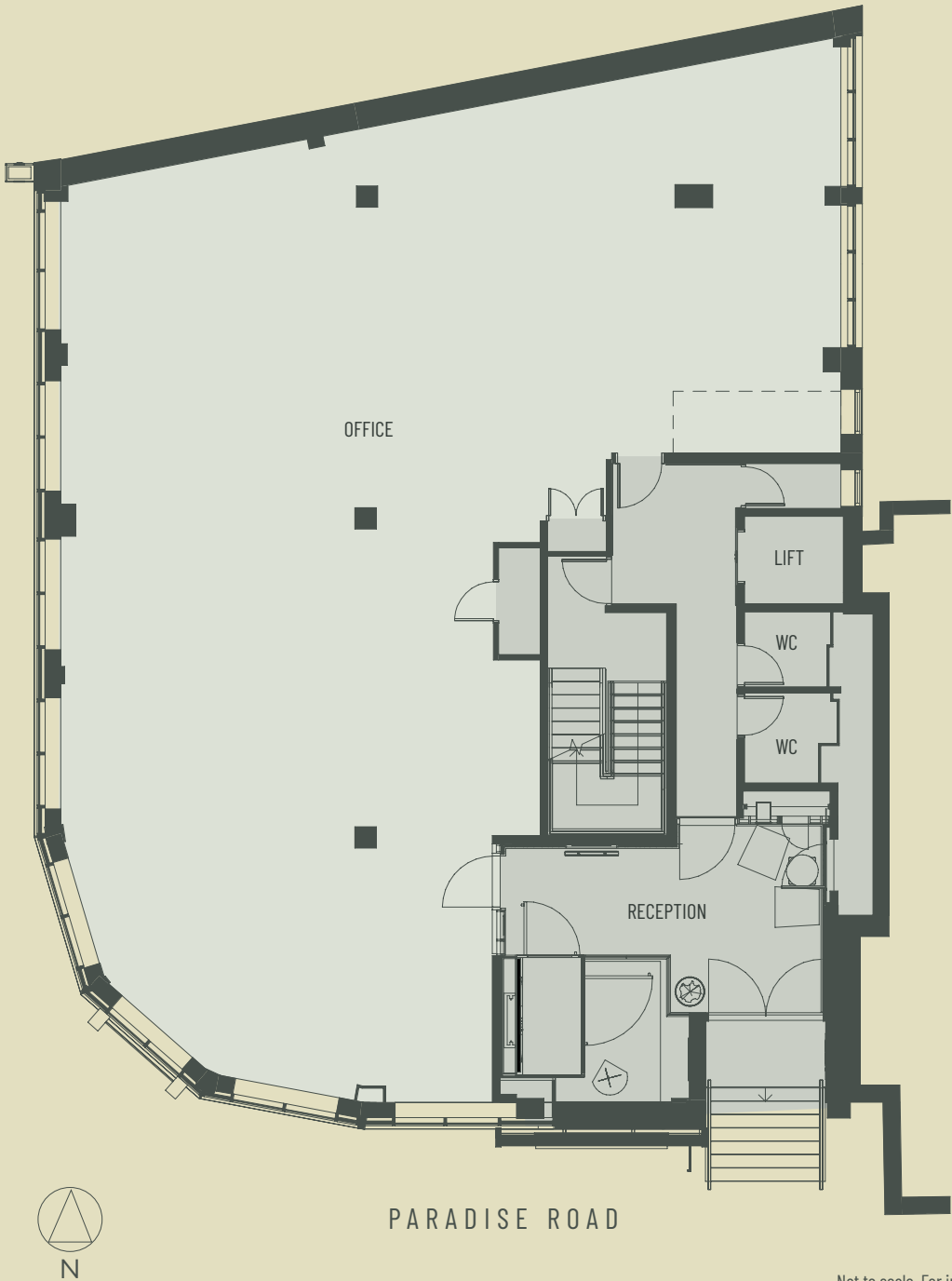


Not to scale. For indicative purposes only.

FLOOR PLANS

Floor	sq ft	sq m
Level 4	1,554	144.4
Level 3	2,468	229.3
Level 2	2,462	228.7
→ Level 1	2,047	190.2
Level 0	2,005	186.3
Total	10,537	978.9

ETON STREET

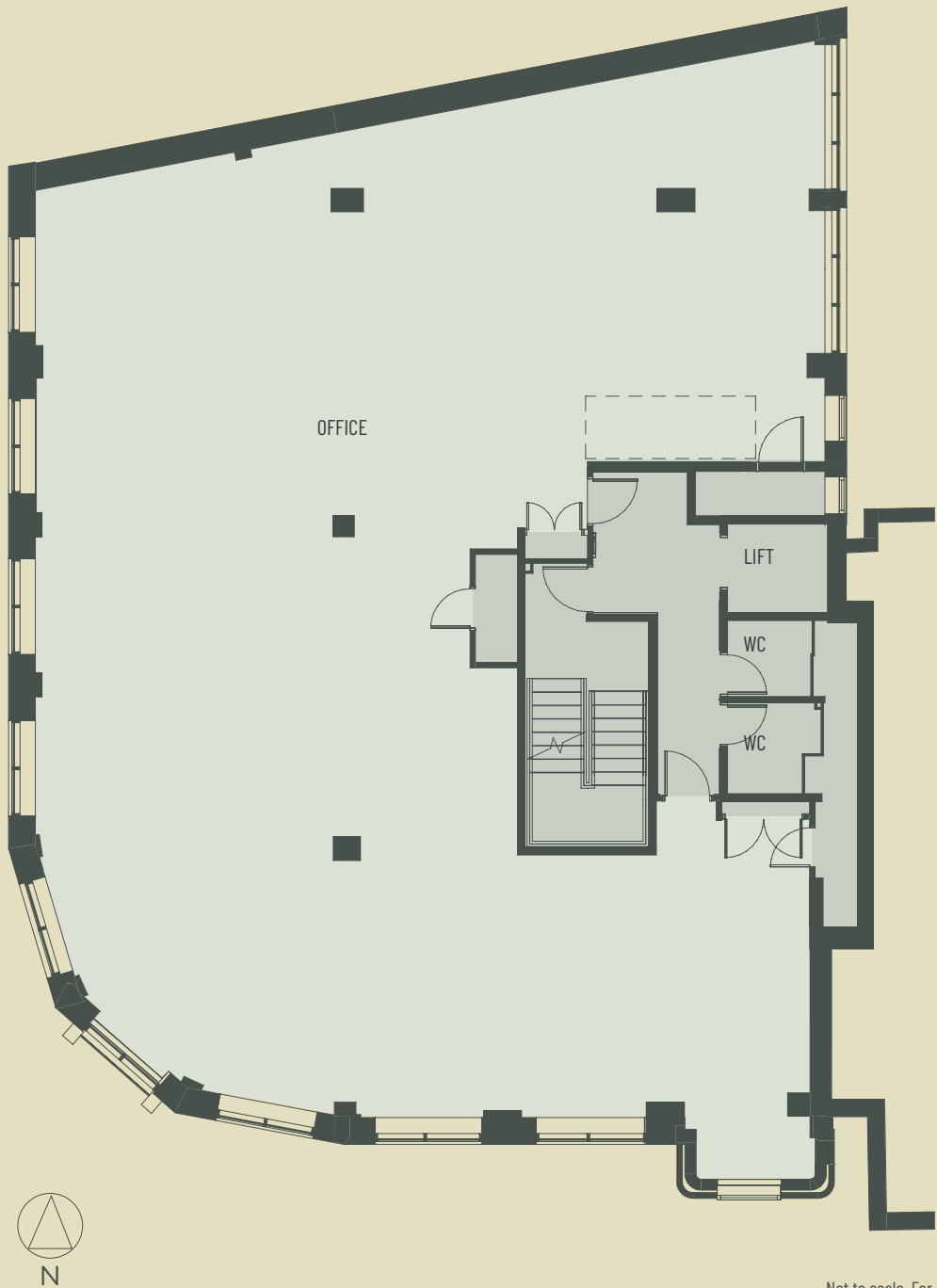


LEVEL
1

Not to scale. For indicative purposes only.

FLOOR PLANS

Floor	sq ft	sq m
Level 4	1,554	144.4
Level 3	2,468	229.3
→ Level 2	2,462	228.7
Level 1	2,047	190.2
Level 0	2,005	186.3
Total	10,537	978.9



LEVEL
2

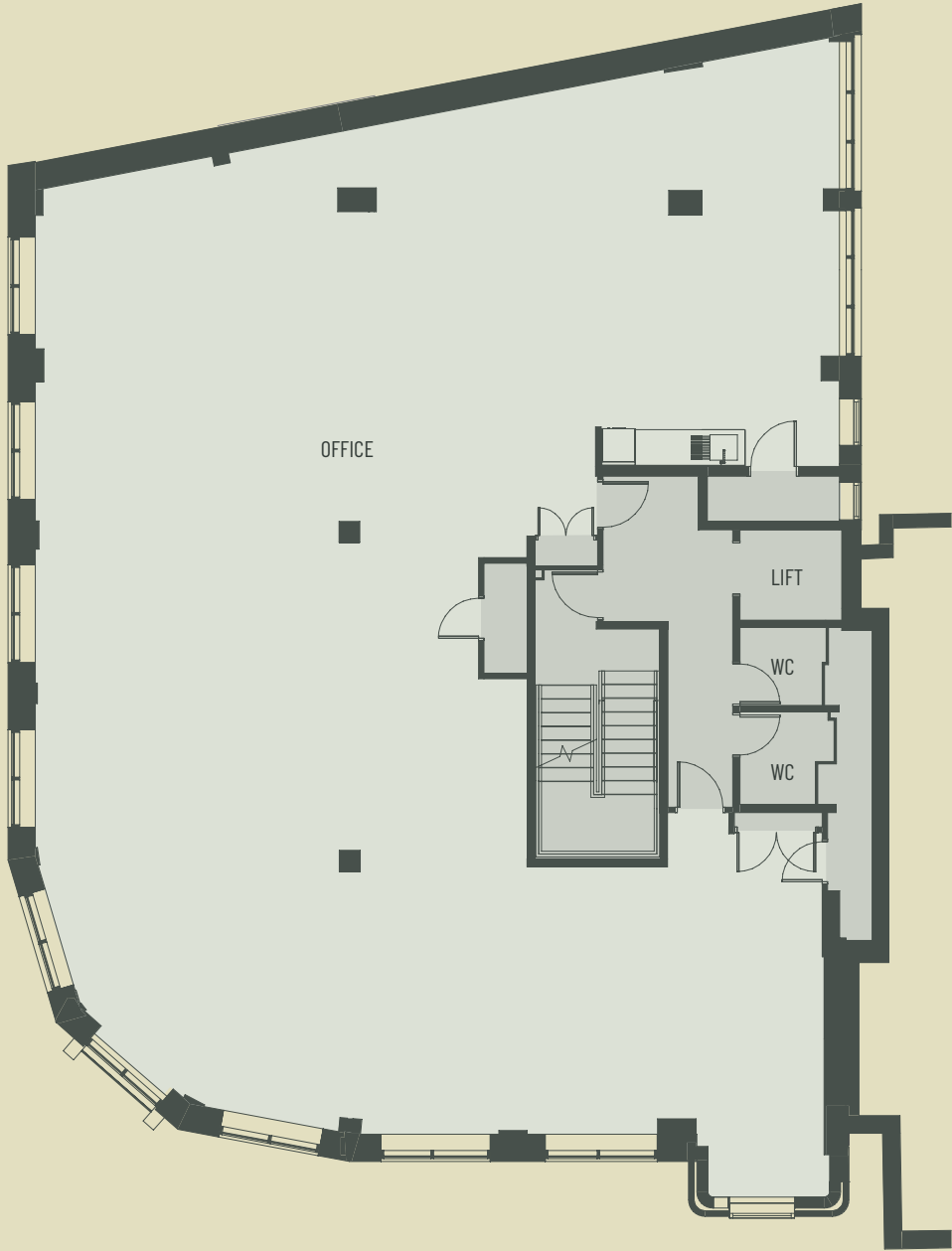
Not to scale. For indicative purposes only.

FLOOR PLANS

LEVEL
3



Floor	sq ft	sq m
Level 4	1,554	144.4
Level 3	2,468	229.3
Level 2	2,462	228.7
Level 1	2,047	190.2
Level 0	2,005	186.3
Total	10,537	978.9

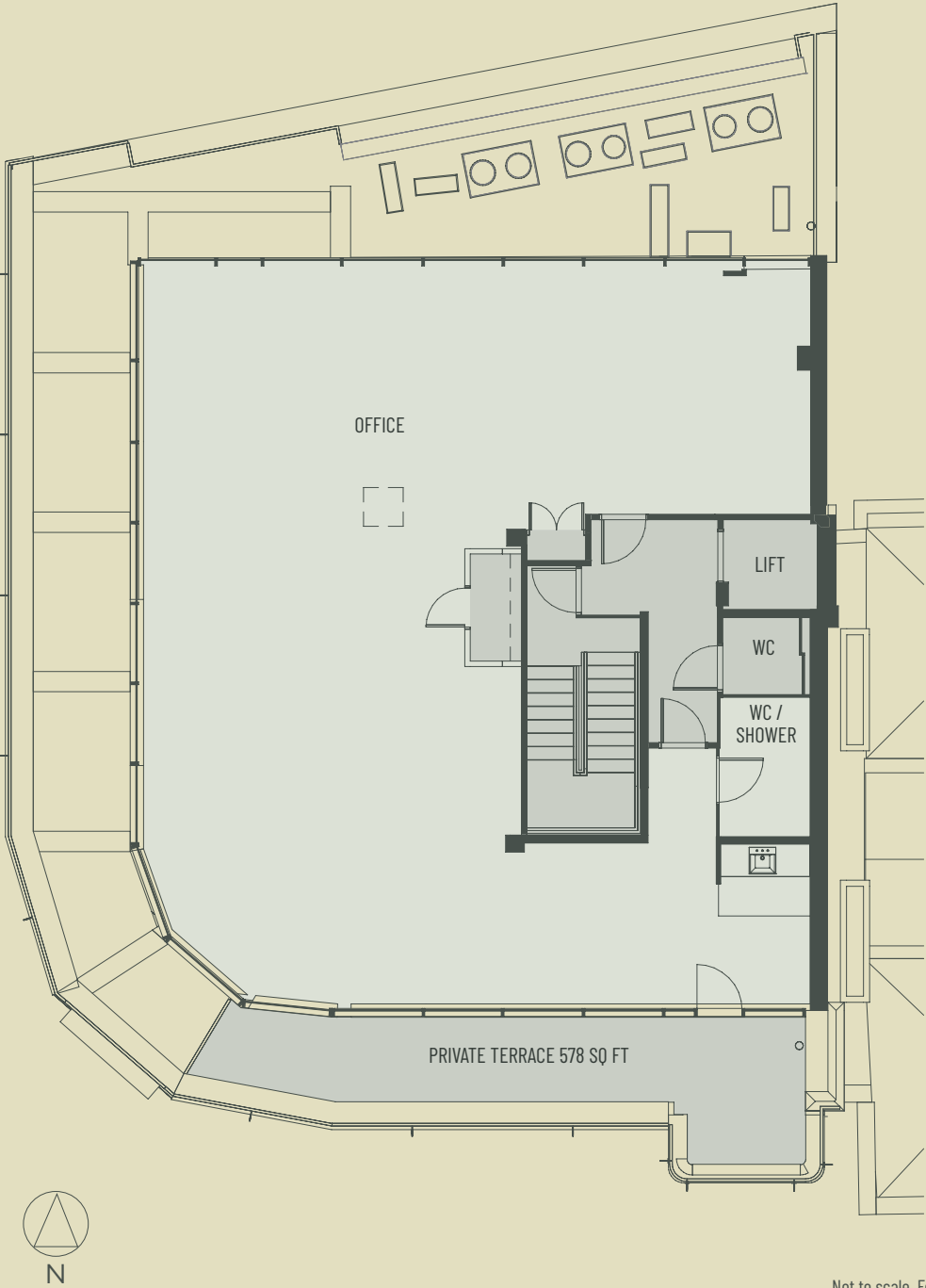


Not to scale. For indicative purposes only.

FLOOR PLANS



Floor	sq ft	sq m
Level 4	1,554	144.4
Level 3	2,468	229.3
Level 2	2,462	228.7
Level 1	2,047	190.2
Level 0	2,005	186.3
Total	10,537	978.9



LEVEL
4

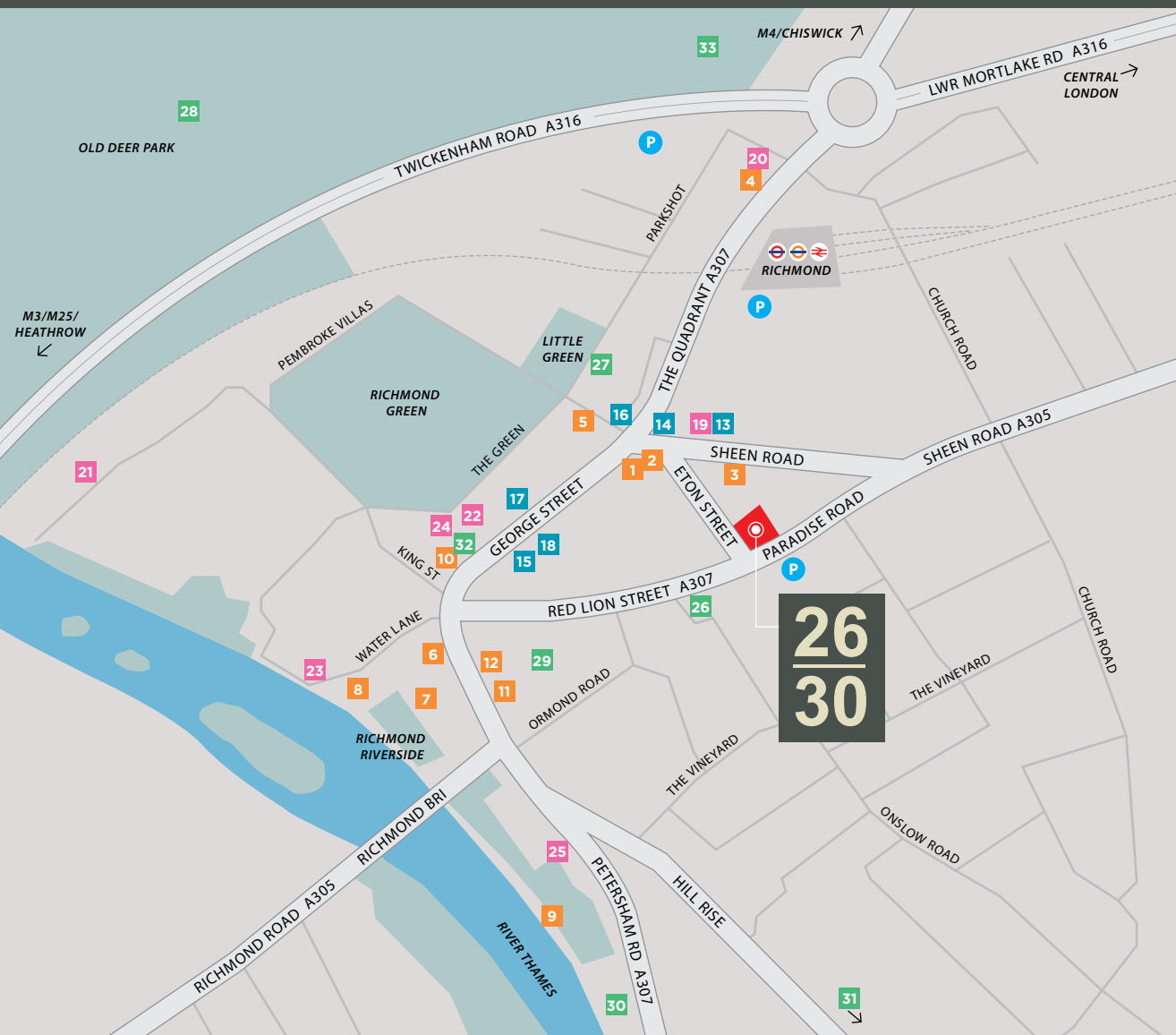
Not to scale. For indicative purposes only.

ONE OF LONDON'S FINEST TOWNS



LOCAL AMENITIES

Richmond has it all - shop at a selection of national retailers and boutiques; have a coffee or glass of wine in one of the number of cafés and bars or go for a run along the River and through Richmond Park.



RESTAURANTS & CAFÉS

- 1 Leon
- 2 Joe & The Juice
- 3 Kiss The Hippo
- 4 Cinnamon Bazaar
- 5 No1 Duke Street
- 6 The Ivy Café
- 7 Brindisa
- 8 Scotts
- 9 Gaucho
- 10 Sticks 'n' Sushi
- 11 Ottolenghi
- 12 Cocotte

SHOPS

- 13 Waitrose
- 14 Lululemon
- 15 Oliver Bonas
- 16 Aesop
- 17 Anthropologie
- 18 M&S

PUBS & BARS

- 19 Tap Tavern
- 20 The Orange Tree
- 21 The White Swan
- 22 The Cricketers
- 23 The White Cross
- 24 The Prince's Head
- 25 Be At One

LEISURE & GYMS

- 26 Travelodge
- 27 Richmond Theatre
- 28 Royal Mid-Surrey Golf Club
- 29 Richmond Hill Health Club
- 30 Bingham Riverhouse
- 31 Harbour Hotel
- 32 Third Space
- 33 Richmond Rugby Club

POST CODE: TW9 1SE

TRAVEL

Richmond Station is only a short walk from the building with fast links by Rail, London Overground & Underground to Central and Greater London.

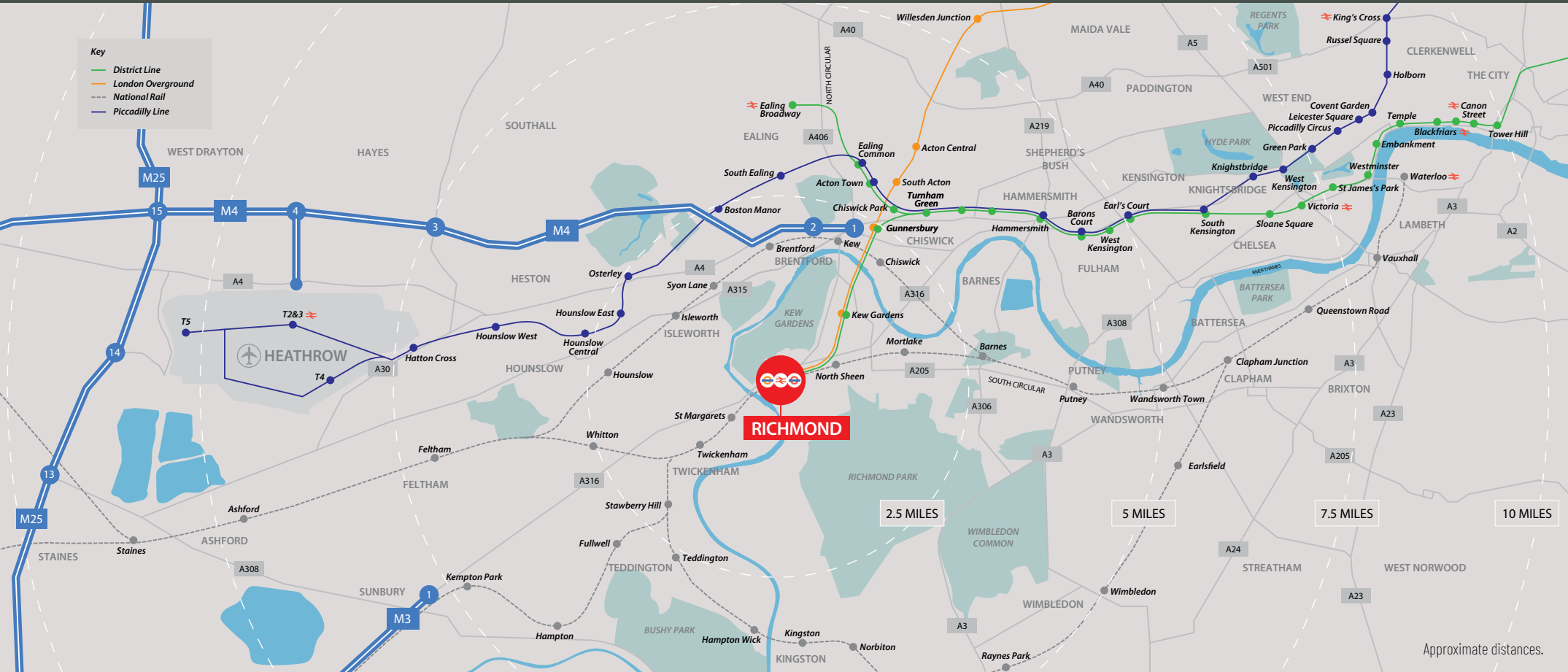


By Underground	Minutes
Gunnersbury	6
Hammersmith	16
Earl's Court	21
London Paddington	29
London Victoria	29
Green Park	29
London Marylebone	29
Bank (via Waterloo)	33
Heathrow Airport	35
London King's Cross	37

By Rail	Minutes
Clapham Junction	8
Willesden Junction	17
London Waterloo	19
Wimbledon	22
Stratford	50

By Road	Miles
M4	2.5
Hammersmith	4.6
M3	6.3
West End	7.7
M25	11.2
Heathrow Airport	11.4

POST CODE: TW9 1SE



26
30

PARADISE ROAD

RICHMOND TW9 1SE

CONTACTS

bray
fox
smith

CHRIS BULMER

07917 526 855

chrisbulmer@brayfoxsmith.com

CLARE LANE

07866 622 013

clarelane@brayfoxsmith.com

MATTHEW SMITH

07436 976 049

matthewsmith@brayfoxsmith.com

Misrepresentation Act: Bray Fox Smith, for themselves and the lessor of this building give notice that these particulars do not form, or form part of any offer or contract. They are intended to give fair description of the building and whilst every effort has been made to ensure their accuracy this cannot be guaranteed. Any intending tenant must therefore satisfy themselves by inspection or otherwise. Bray Fox Smith nor any of their employees, has any authority to make or give any further representations or warranty whatsoever in relation to this building. May 2025.